

Parkheath

Sold on Service

Downside Crescent NW3
£2,686 PCM (£620 per week)



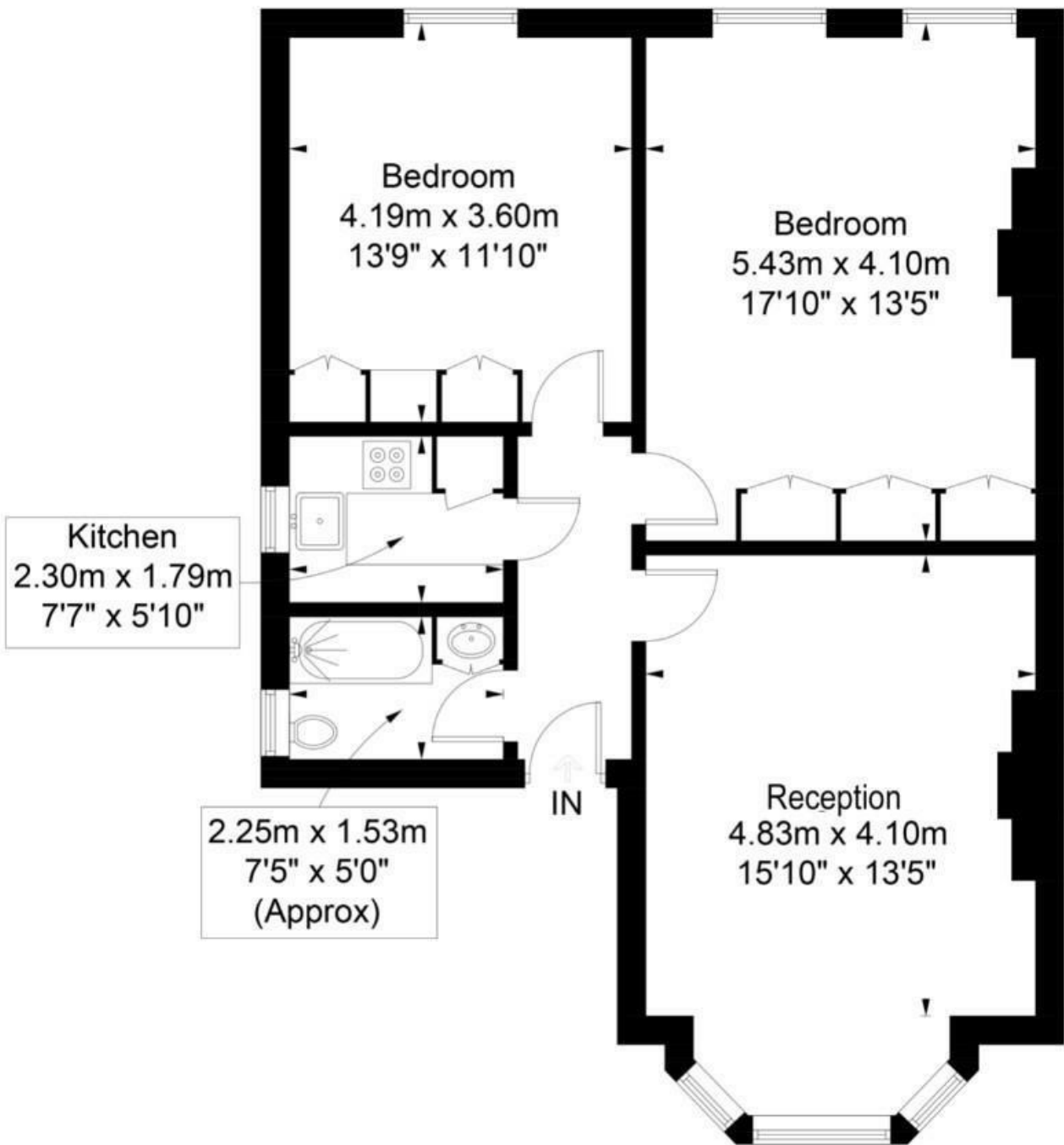
Beautifully presented 1st floor apartment
High ceilings and wood floors
Sperate modern kitchen
3 piece bathroom
Close to Hampsated Heath

Imposing period conversion
Reception with bay window
2 double bedrooms with fitted wardrobes
Ideally located for Belsize Park tube
Moments from the areas amenities

Belsize Park Office 020 7431 1234

Downside Crescent

Approximate Gross Internal Area = 73.9 sq m / 795 sq ft



First Floor

Illustration for identification purposes only, measurements are approximate,
not to scale. FloorplansUsketch.com © 2019 (ID524171)
ELLIE CLAIRE PHOTOGRAPHY LTD

The particulars do not constitute part of an offer or contract. The particulars, including text, photographs and plans, are for the guidance only of prospective purchasers/tenants and must not be relied upon as statements of fact. The descriptions provided therein represent the opinion of the author and whilst given in good faith should not be construed as statements of fact. Nothing in these particulars shall be deemed a statement that the property is in good condition or otherwise or that any services or facilities are in good working order. All measurements are approximate